

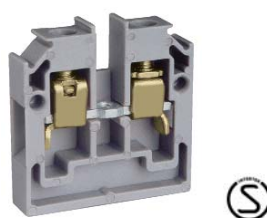
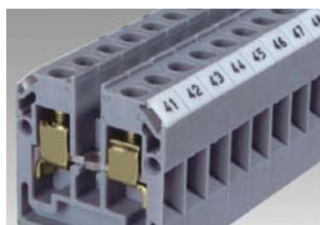
Modular Panel Mount Terminal Blocks




TECHNA Modular panel mounting Terminal blocks provide an excellent solution for extremely compact wiring applications.

The terminal blocks are “add-on” type and can be stacked to form a multipole terminal block assembly. The stacked assembly is fitted with mounting end plate at both ends for easy installation on to the panel.

Note:





For stacked assemblies having more than twenty terminal blocks, additional end plate must be fitted at every twentieth terminal block.

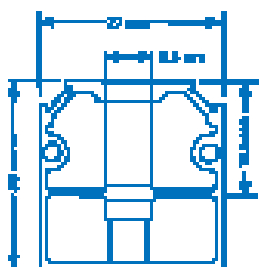


Model	Ttec CMB4		
Terminal Block Pitch	6 mm		
Height x Width	28 x 27 mm		
Conn.	Stranded Wire	0.5 to 4 mm ²	
Possibility	Solid Wire	0.5 to 6 mm ²	
Stripping Length	9 mm		
Insulation Material	Polyamide 6.6		
Type of Connection	2 screw clamps and 1 tapped hole for cross connection		
Certification	CE	  	
Rated Cross Section	22-10 AWG	0.5-4 mm ²	22-10 AWG
Voltage Rating	300 V	400 V	300 V
Rated Impulse Voltage/Pollution Degree	4 kV/3		
Current Rating	35 A	32 A	35 A
Torque	7 lb-in	0.5 Nm	7 lb-in

Cat No.

Std. Pack

Terminal Block	CMB4	100	
End Plate/Stop	EPCMB4	50	
Separator Plate	 SPCMB4	100	
Insulated	2 Way	 CA747/2	100
	3 Way		50
	4 Way		50
	Pre-assembled		CA747/4
Shorting Links	10 Way	CA747/10	10
	100 Way		
Insulated	2 Way	 CA714/2	100
	3 Way		100
	4 Way		100
	Comb Type		CA714/4
Shorting Links	10 Way	CA714/10	50
Marking Tags (K-type)	 CA509/K2	100	



End Plate / Stop